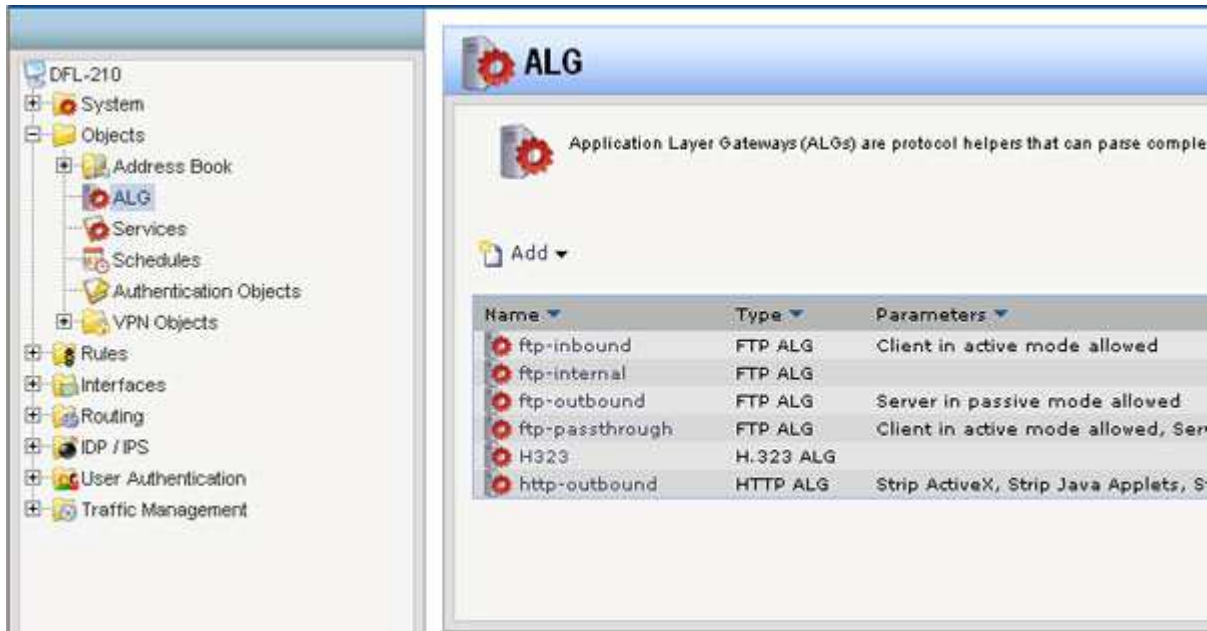


How do I configure the content filtering to block URL web access?

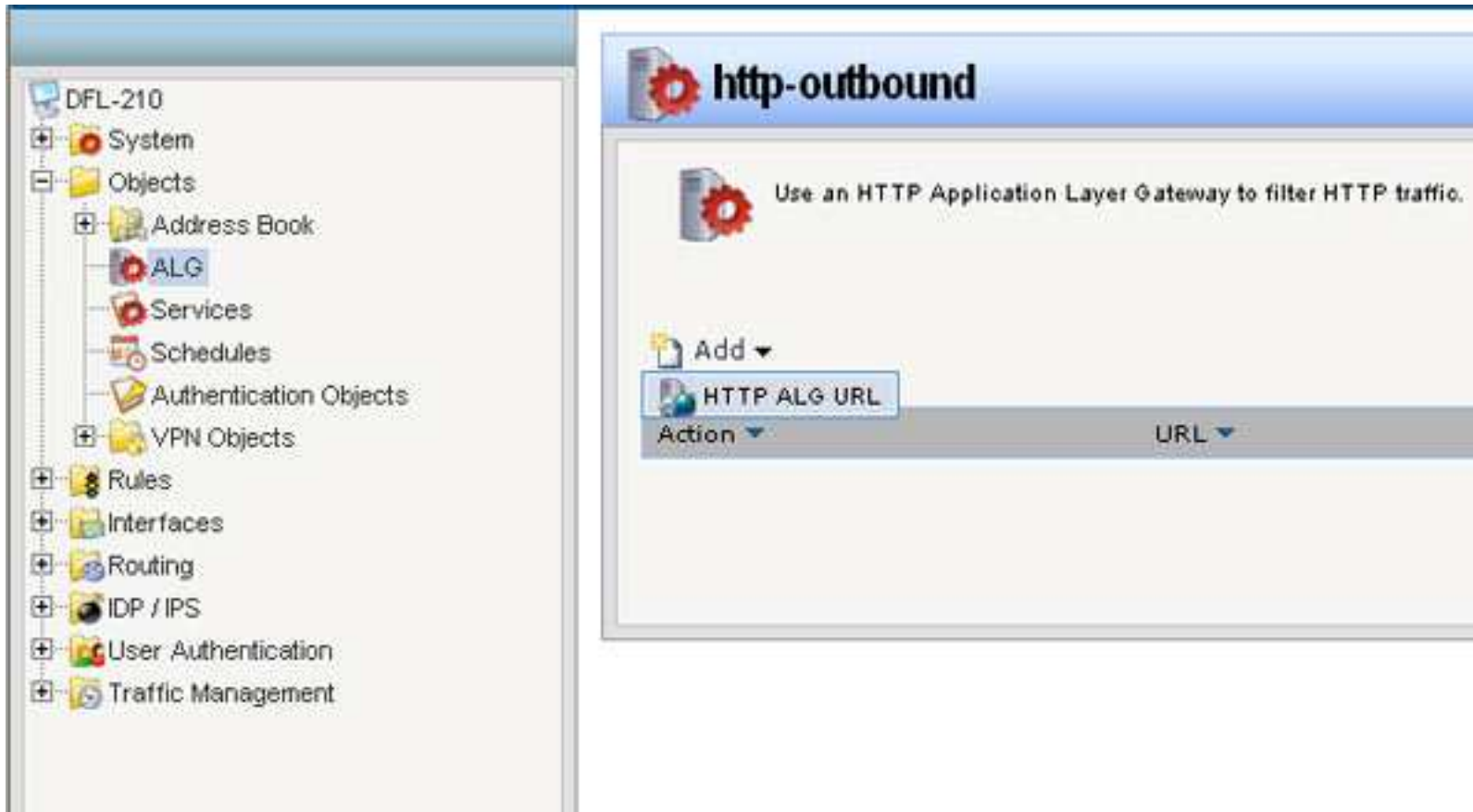
Step 1: Open a web browser and type the IP address of the firewall into the address bar (default is **192.168.1.1**). Press Enter.

Step 2: The default username is **admin** (all lower case) and the password is **admin** (all lower case). Click on **OK**.

Step 3: Click on the plus sign next to **Objects** and then select **Application Layer Gateways**.



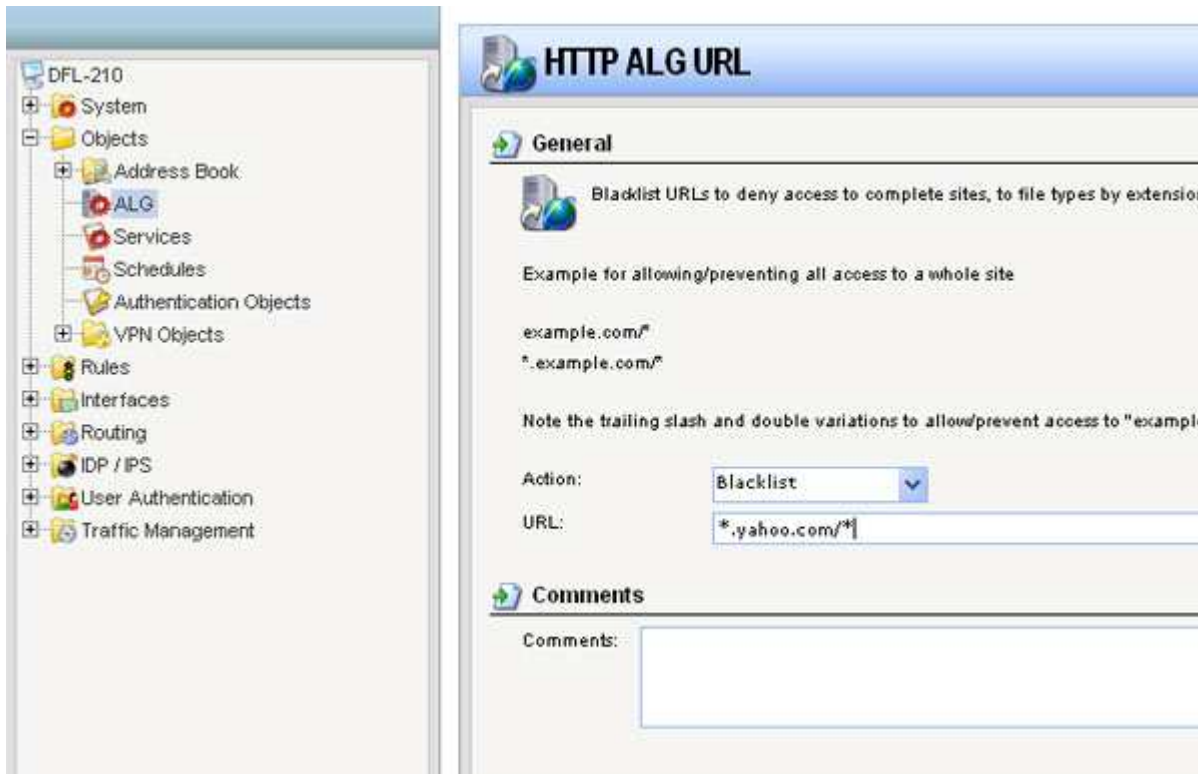
Step 4: Select **http-outbound**, click on **Add**, and then select **HTTP ALG URL**.



Step 5: Create the *Content Filtering* list as followed:

- **Action:** Blacklist
- **URL:** Key in desired filter URL in the format of Asterisk,dot,yahoo.com, forward slash, asterisk (*.yahoo.com/* in this example)

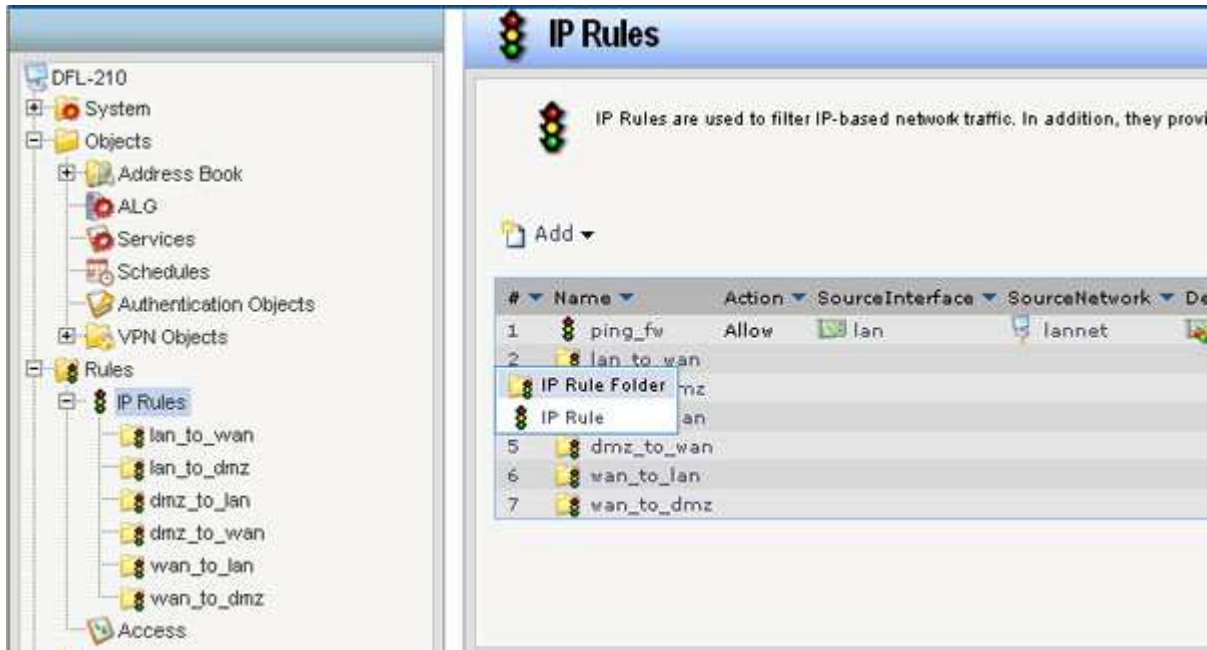
Click on **OK**.



Step 6: Click on the plus sign next to **Rules**, select **IP Rules**, click on **Add**, and then select **IP Rule Folder**.

- **Name:** name the folder as desired

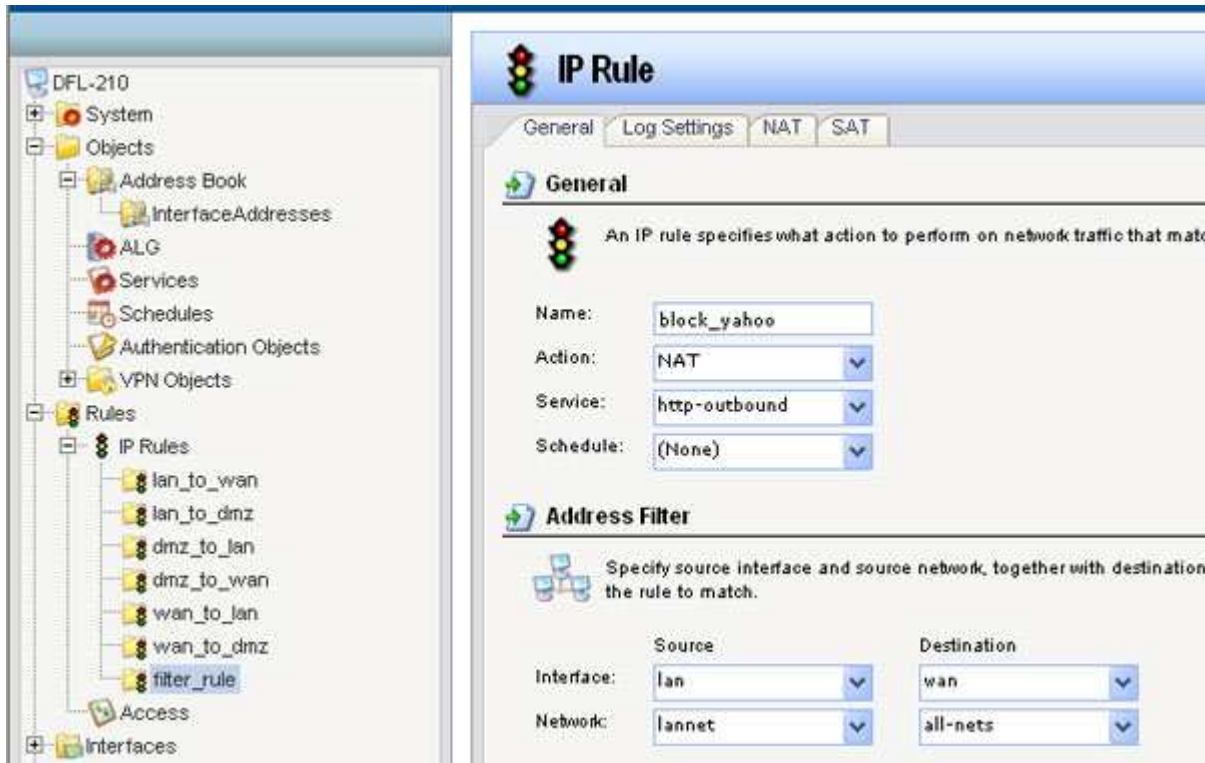
Click on **OK**.



Step 7: Click on **Add** and select **IP Rule** and configure as followed:

- **Name:** name as desired
- **Action:** NAT
- **Service:** http-outbound
- **Schedule:** None
- **Source Interface:** lan
- **Source Network:** lannet
- **Destination Interface:** wan
- **Destination Network:** all-nets

Click on **OK**.



Step 8: Click on the **Configuration** tab and select **Save and Activate** from the dropdown menu.

The screenshot shows a network configuration interface for a device named DFL-210. The left sidebar displays a tree view of configuration categories: System, Objects, Rules, and Access. Under 'Rules', the 'IP Rules' folder is expanded, showing several rule folders: lan_to_wan, lan_to_dmz, dmz_to_lan, dmz_to_wan, wan_to_lan, wan_to_dmz, and filter_rule. The 'filter_rule' folder is selected. The main window displays the configuration for 'filter_rule'. It includes a title bar with a traffic light icon and the text 'filter_rule'. Below the title bar, there is a description: 'An IP Rule folder can be used to group IP Rules into logi'. An 'Add' button is visible. A table lists the rules:

#	Name	Action	SourceInterface	Source
1	block_yahoo	NAT	lan	lanr

Click on **OK** to activate and save your changes.