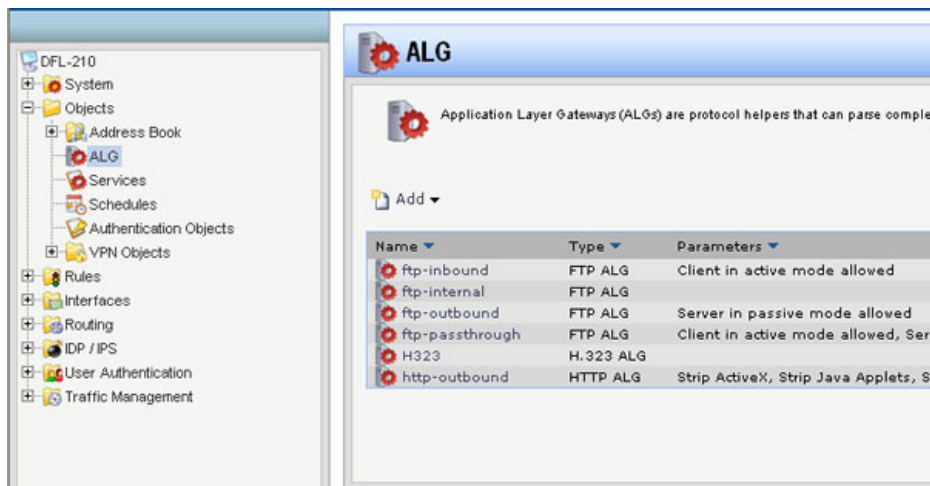


Q How do I configure the content filtering to block URL web access?

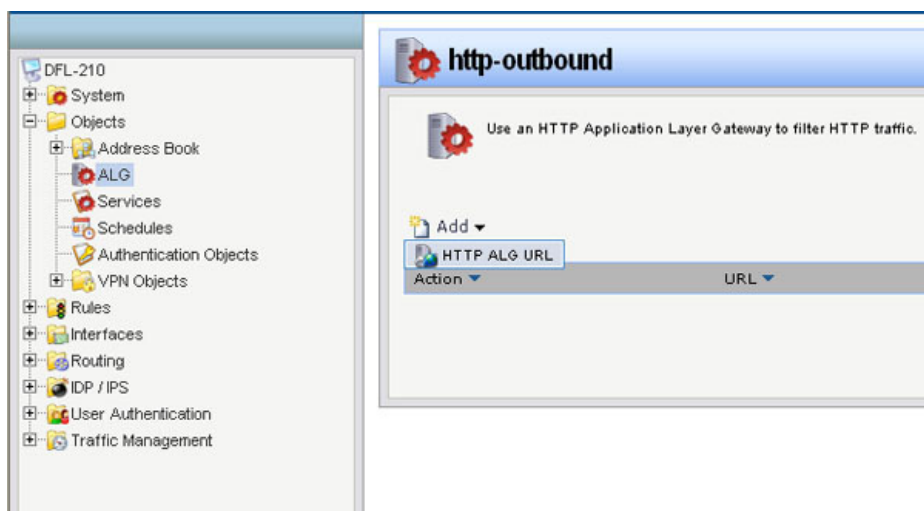
A **Step 1:** Open a web browser and type the IP address of the firewall into the address bar (default is **192.168.1.1**). Press Enter.

Step 2: The default username is **admin** (all lower case) and the password is **admin** (all lower case). Click on **OK**.

Step 3: Click on the plus sign next to **Objects** and then select **Application Layer Gateways**.



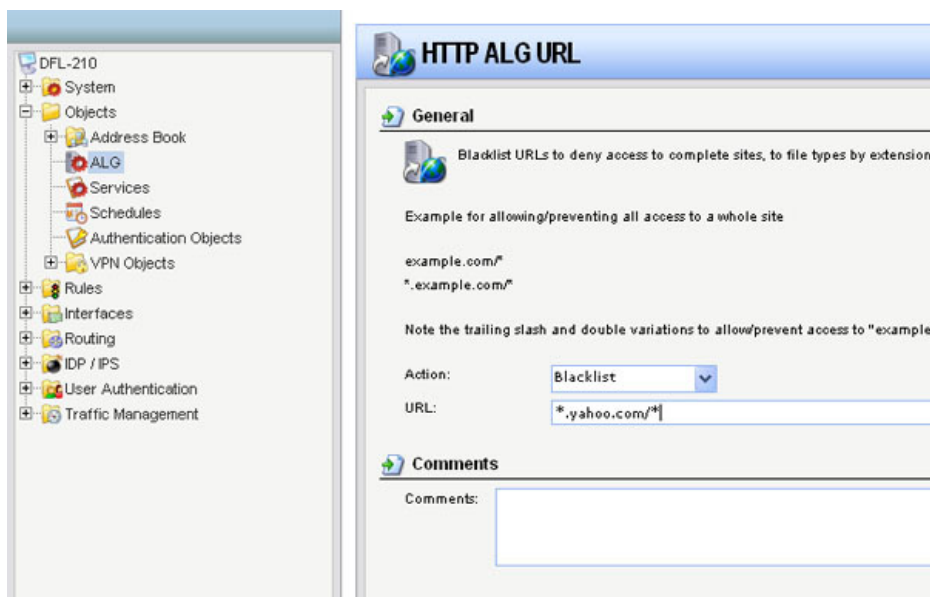
Step 4: Select **http-outbound**, click on **Add**, and then select **HTTP ALG URL**.



Step 5: Create the *Content Filtering* list as followed:

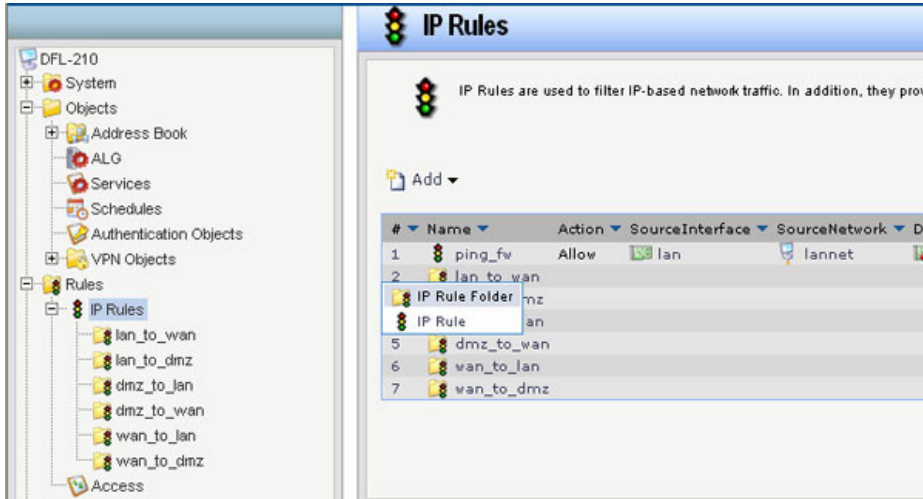
Action: Blacklist

URL: Key in desired filter URL in the format of Asterisk,dot,yahoo.com, forward slash, asterisk (*.yahoo.com/* in this example)
Click on **OK**.



Step 6: Click on the plus sign next to **Rules**, select **IP Rules**, click on **Add**, and then select **IP Rule Folder**.

Name: name the folder as desired
Click on **OK**.



Step 7: Click on **Add** and select **IP Rule** and configure as followed:

Name: name as desired

Action: NAT

Service: http-outbound

Schedule: None

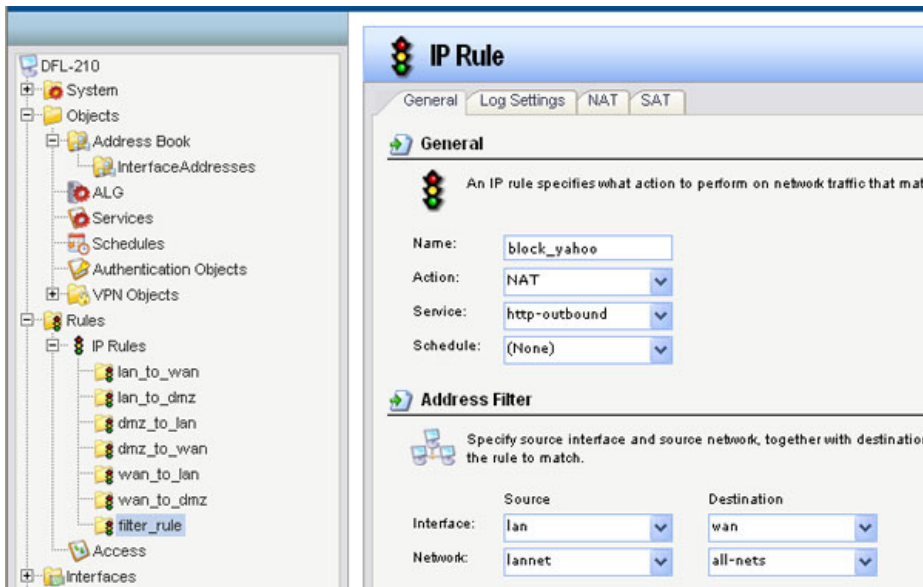
Source Interface: lan

Source Network: lannet

Destination Interface: wan

Destination Network: all-nets

Click on **OK**.



Step 8: Click on the **Configuration** tab and select **Save and Activate** from the dropdown menu. Click on **OK** to activate and save your changes.

The screenshot displays a network configuration interface for a DFL-210 device. The left sidebar shows a tree view of the configuration hierarchy:

- DFL-210
 - System
 - Objects
 - Address Book
 - InterfaceAddresses
 - ALG
 - Services
 - Schedules
 - Authentication Objects
 - VPN Objects
 - Rules
 - IP Rules
 - lan_to_wan
 - lan_to_dmz
 - dmz_to_lan
 - dmz_to_wan
 - wan_to_lan
 - wan_to_dmz
 - filter_rule
 - Access

The main window shows the configuration for the selected 'filter_rule' folder. It includes a description: "An IP Rule folder can be used to group IP Rules into logi...". Below this is an "Add" button and a table of rules:

#	Name	Action	SourceInterface	SourceIP
1	block_yahoo	NAT	lan	lanr