



**Configuration examples for the D-Link
NetDefend Firewall series
DFL-210/260/800/860/1600/2500
Scenario: How to block www.facebook.com**

Last update: 2007-09-07

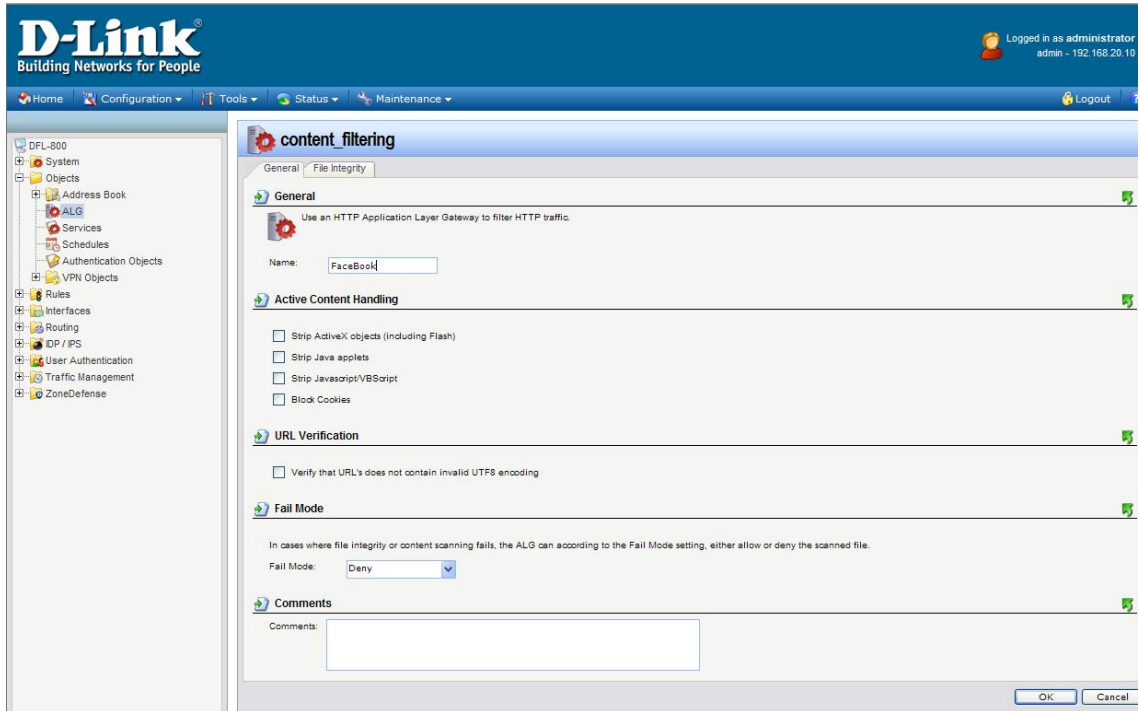
URL Blocking Facebook

Facebook (www.facebook.com) is a widely spread community for online communication and information sharing. D-Link NetDefend firewalls and UTMs can block access to Facebook and give network administrators the possibility to control the Internet usage.

Please refer to the guide below how to block Facebook traffic.

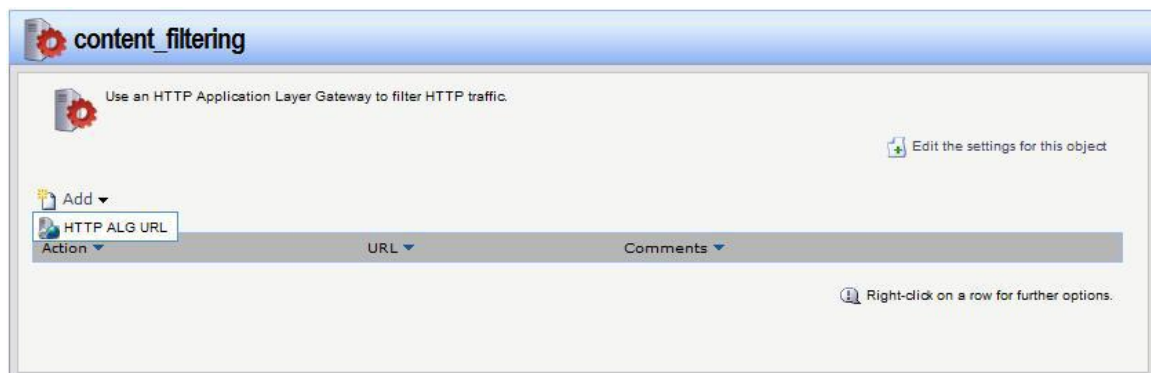
Step 1 - Create new ALG

Go to “Objects” – “ALG” Click on “Add” and choose “http ALG”
Type in a name and click OK.

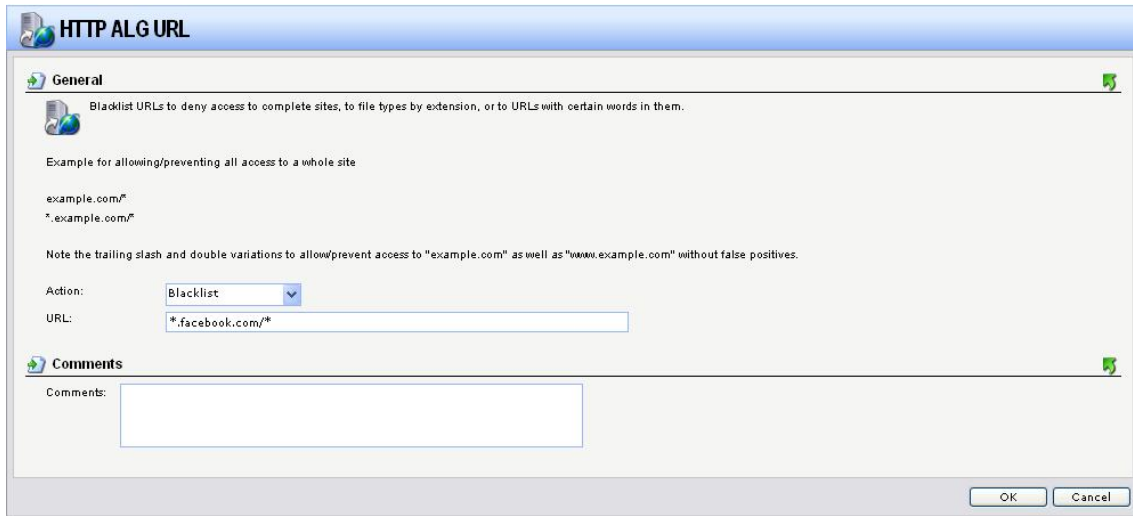


Step 2 – Add HTTP ALG URL

Click “Add” and choose “HTTP ALG URL”



Choose “Blacklist” in action and type in the URL you want to block.
.facebook.com/ to block a whole site. And click ok.



Step 3 Apply the ALG in Service

Go to “Objects” – “Services” and choose the service you want the ALG to be applied to. For example “all_tcp”

Under “ALG” choose the ALG you just made and click ok.

The screenshot displays the D-Link web management interface. At the top left is the D-Link logo with the tagline "Building Networks for People". The top right shows the user is logged in as "administrator" with IP "192.168.20.10". The navigation bar includes "Home", "Configuration", "Tools", "Status", and "Maintenance". A left sidebar contains a tree view of system components: System, Objects, Address Book, ALG, Services, Schedules, Authentication Objects, VPN Objects, Rules, Interfaces, Routing, DP / IPS, User Authentication, Traffic Management, and ZoneDefense. The main content area is titled "all_tcp" and is divided into three sections: "General", "Application Layer Gateway", and "Comments".

General

A TCP/UDP Service is a definition of an TCP or UDP protocol with specific parameters.

Name:

Type:

Source:

Destination:

Enter port numbers and/or port ranges separated by commas. For example: 137-139,445

Pass returned from ICMP error messages from destination

SYN flood protection (SYN Relay)

Application Layer Gateway

An Application Layer Gateway (ALG), capable of managing advanced protocols, can be specified for this service.

ALG:

Max Sessions:

Comments

Comments:

Buttons:

Click "Configuration" and "Save And Activate"

What happens when Facebook is blocked by the NetDefend firewall or UTM?

If a user tries to access the domain www.facebook.com the next image is shown in the web browser....

